

Front Suspension Strut Mount and Bearing Replacement

Special Tools

[CH-48845](#)

Removal Procedure

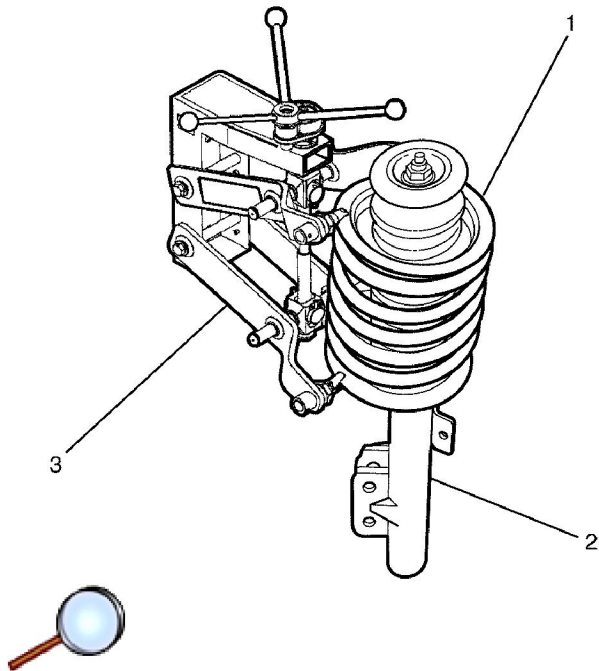
1. Ignition OFF.

Caution: Refer to [Vehicle Lifting Caution](#) in the Preface section.

2. Raise and support the vehicle. Refer to [Lifting and Jacking the Vehicle](#).

Caution: Refer to [Safety Glasses Caution](#) in the Preface section.

3. Remove the front wheel. Refer to [Tire and Wheel Removal and Installation](#).
4. Remove the front strut assembly. Refer to [Strut Assembly Replacement](#).



Caution: Use only the CH-48845 Spring Compressor when servicing suspension components on this vehicle. Other tools may not be strong enough for the springs on this vehicle and you could be injured if you do not use Special Tool CH-48845. Failure to do so could result in serious personal injury.

5. Support the front strut assembly (2) in a suitable device.

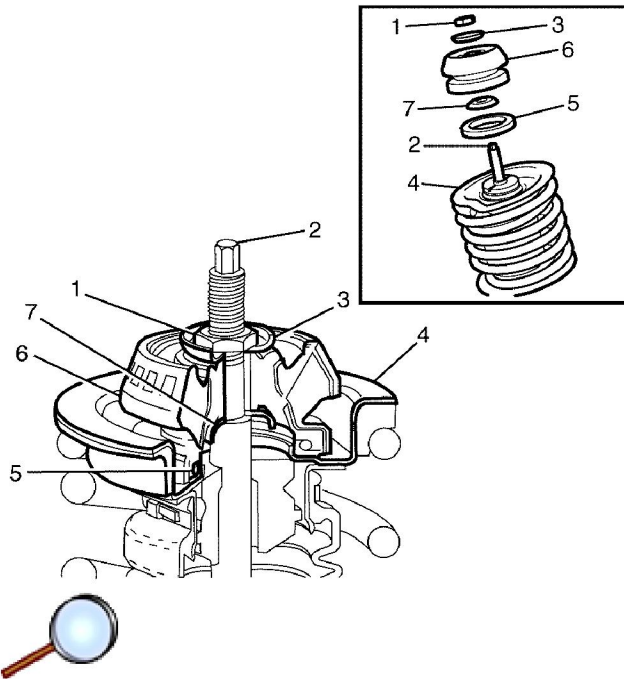
Caution: Do not over compress the spring. Severe overloading may cause tool failure which could result in bodily injury.

© 2012 General Motors Corporation. All rights reserved.

Caution: To prevent personal injury and/or component damage, use the proper tools to support the lower control arm when removing the coil spring. The coil spring is under extreme pressure and can become a projectile should the spring separate from the lower control arm before all of the tension is relieved.

Important: Only use hand tools to perform the following service procedure.

6. Install the [CH-48845](#) (3) to the coil spring (1).
7. Compress the coil spring (1) using [CH-48845](#) (3) until the front strut assembly (2) is free from the spring tension of the coil spring (1).



8. Using a suitable tool hold the front strut piston shaft (2) while loosening the front strut assembly retaining nut (1).
9. Remove and discard the front strut assembly retaining nut (1).

Important: Note the orientation of the cup washer (3) in relation to the front strut assembly support mount (6).

10. Remove the front strut assembly cup washer (3).
11. Remove the front strut assembly support mount (6).

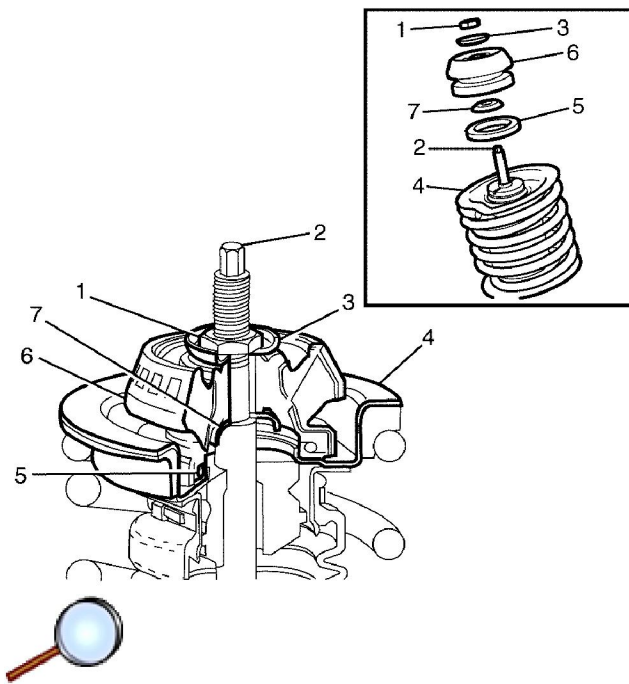
Important: Note the orientation of the cup washer (7) in relation to the front strut assembly support mount (6).

12. Remove the front strut assembly cup washer (7)

Important: Note the orientation of the front strut assembly support bearing (5) in relation to the coil spring seat (4).

13. Remove the front strut assembly bearing (5).

Installation Procedure



Important: The front strut assembly support bearing (5) is a sealed part and is replaced as an assembly.

Important: Note the orientation of the front strut assembly support bearing (5) in relation to the coil spring seat (4).

1. Instal the front strut assembly bearing (5).

Important: Note the orientation of the cup washer (7) in relation to the front strut assembly support mount (6).

2. Install the front strut assembly cup washer (7)
3. Install the front strut assembly support mount (6).

Important: Note the orientation of the cup washer (3) in relation to the front strut assembly support mount (6).

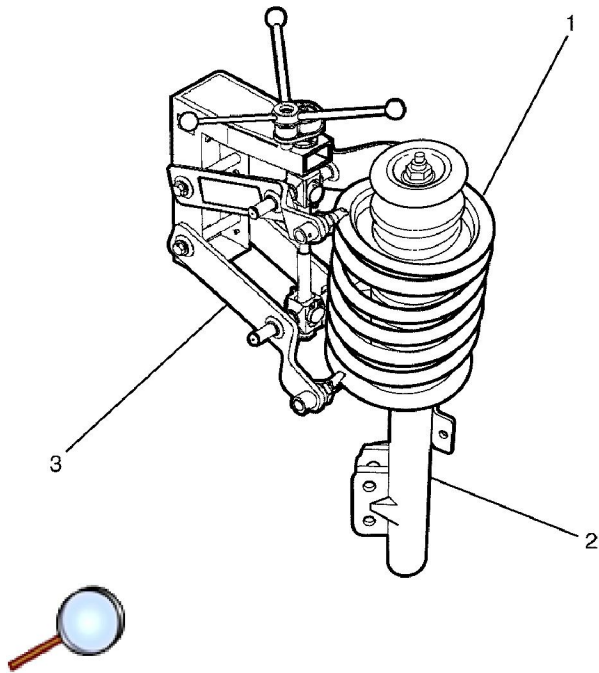
4. Install the front strut assembly cup washer (3).

Notice: Refer to [Fastener Notice](#) in the Preface section.

5. Using a suitable tool hold the front strut piston shaft (2) while installing the NEW front strut assembly retaining nut (1).

Tighten

Tighten the NEW front strut assembly retaining nut (1) to 75 N·m (55 lb ft).



6. Make sure that the coil spring (1) is correctly positioned to the front strut assembly (2).

Caution: Do not over compress the spring. Severe overloading may cause tool failure which could result in bodily injury.

Caution: To prevent personal injury and/or component damage, use the proper tools to support the lower control arm when removing the coil spring. The coil spring is under extreme pressure and can become a projectile should the spring separate from the lower control arm before all of the tension is relieved.

7. Release the [CH-48845](#) (3) from the coil spring (1).
8. Install the front strut assembly to the vehicle. Refer to [Strut Assembly Replacement](#).
9. Install the front wheel to the vehicle. Refer to [Tire and Wheel Removal and Installation](#).
10. Lower the vehicle to the ground.