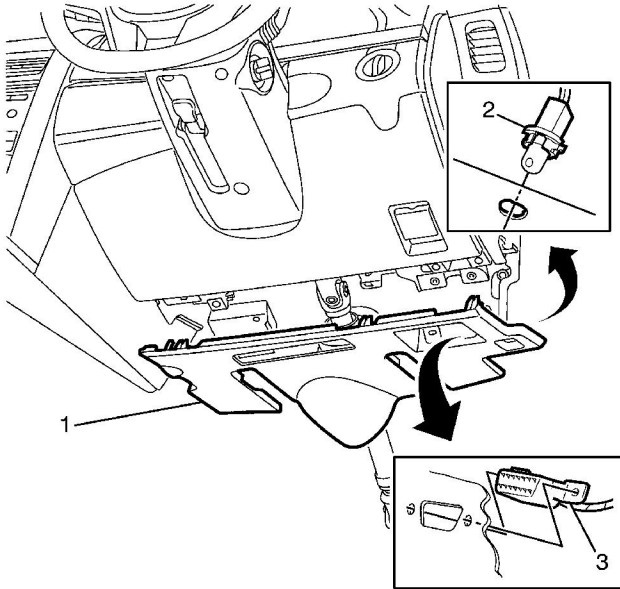


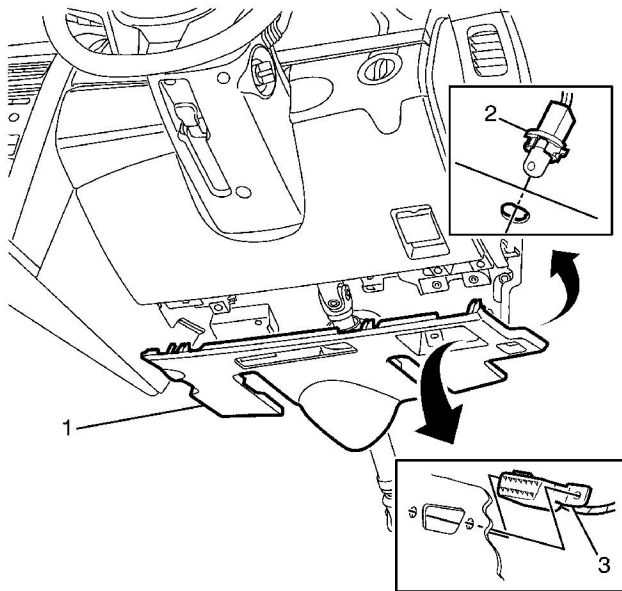
Instrument Panel Insulator Panel Replacement - Right Side (RHD)

Removal Procedure



1. Remove the diagnostic plug (3) from the I/P lower trim plate assembly (1).
2. Grasp the I/P lower trim plate assembly (1) and carefully pull downward to disengage the retaining clips.
3. Disconnect the courtesy lamp socket assembly (2) from the right lower trim plate by turning the socket counterclockwise.
4. Remove the I/P lower trim plate assembly (1).

Installation Procedure



1. Connect the courtesy lamp socket assembly (2) to the I/P lower trim plate assembly (1).
2. Install the diagnostic plug (3) to the I/P lower trim plate assembly (1).
3. Align the I/P lower trim plate assembly (1) to the I/P.
4. Install the I/P lower trim plate assembly (1) to the I/P by pushing in the area of the retaining clips (2).
5. Ensure all clips are located correctly.