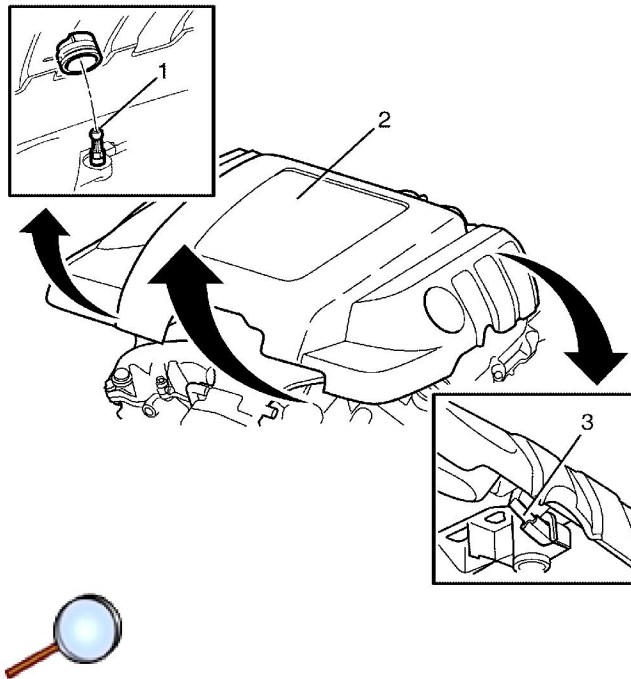


Engine Cover Replacement

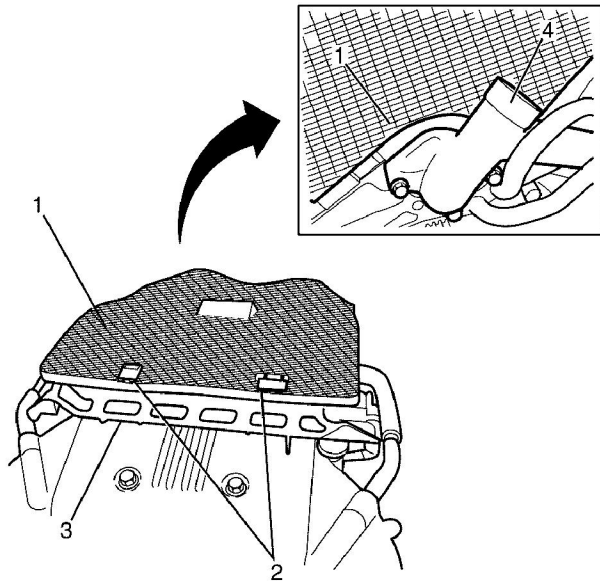
Removal Procedure



Note: Apply suitable pressure on the front edge of the engine cover (2) to disengage the locator legs (1).

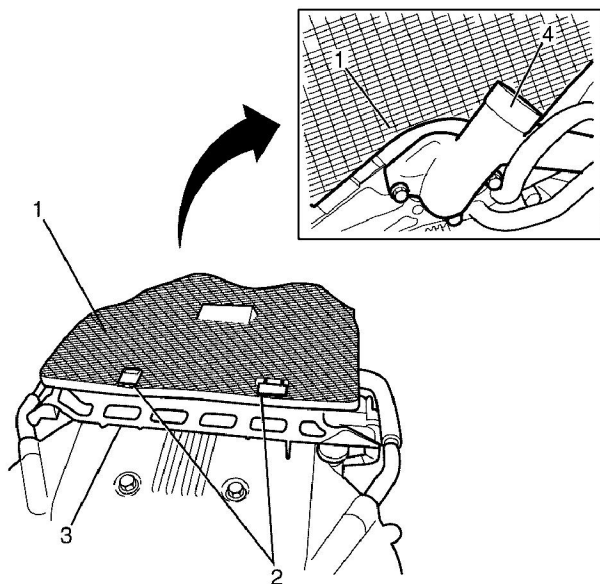
Note: Disengage the engine cover insulator legs (1) by raising the engine cover (2) upwards and moving it suitably forward to release the retention hooks (3).

1. Remove the engine cover (2).



2. Disengage the sound insulator (1) from the two hooks (2) on the intake manifold sight shield bracket (3).
3. Remove the sound insulator (1) ensuring it safely releases from behind the water outlet housing (4).

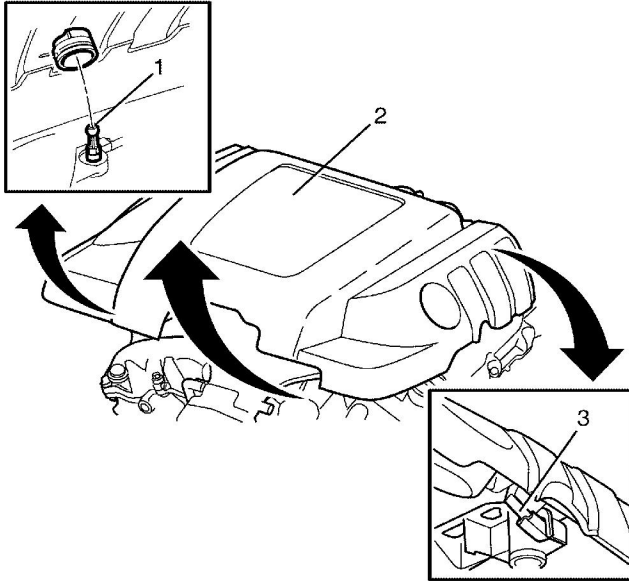
Installation Procedure



Note: Make sure the sound insulator (1) correctly locates behind the water outlet housing (4).

1. Install the sound insulator (1).

- Engage the sound insulator (1) onto the two retention hooks (2) on the intake manifold sight shield bracket (3).



Note: When installing the engine cover (2) onto the engine assembly, make sure to correctly engage the retention hooks (3).

- Install the engine cover (2) onto the engine assembly, engaging the engine cover insulator legs (1).