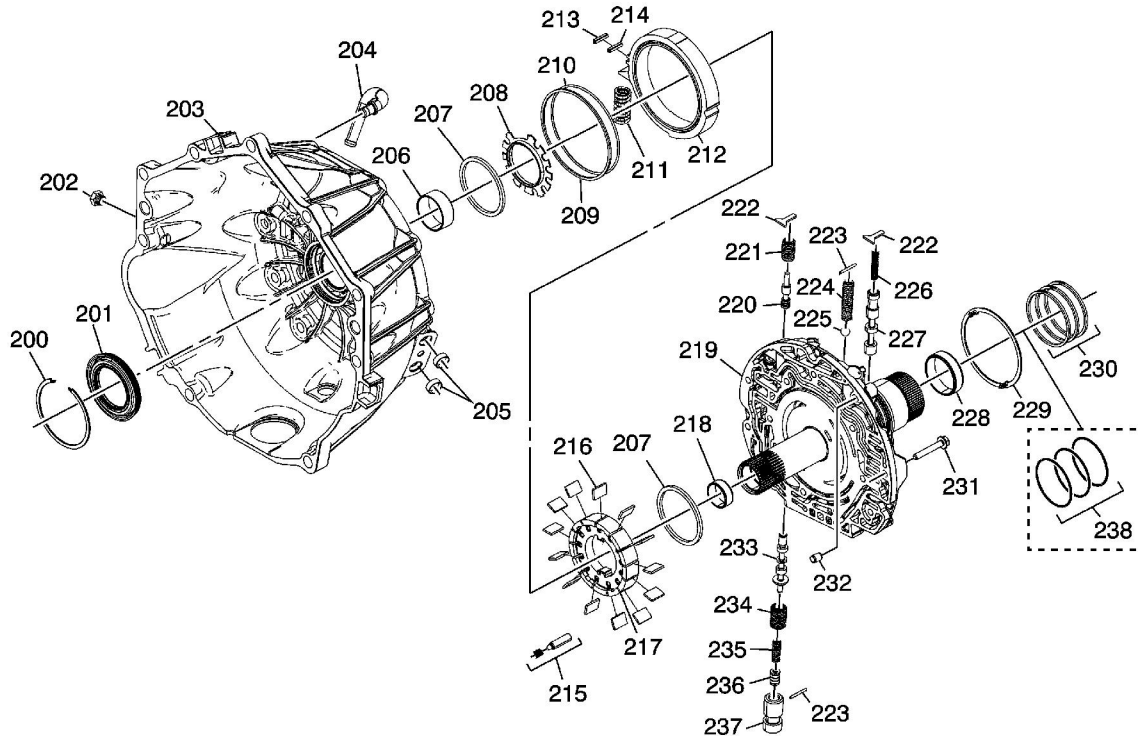


Torque Converter (w/Fluid Pump) Housing Assembly



- (200) Torque Converter Fluid Seal Retaining Ring
- (201) Torque Converter Fluid Seal Assembly
- (202) Line Pressure Test Hole Plug
- (203) Torque Converter Housing - Model Dependent
- (204) A/Trans Vent Pipe
- (205) Trans Fluid Cooler Pipe Fitting Seal
- (206) Torque Converter Bushing
- (207) A/Trans Fluid Pump Vane Ring
- (208) A/Trans Fluid Pump Rotor Guide
- (209) A/Trans Fluid Pump Slide Fluid Seal Ring
- (210) A/Trans Fluid Pump Slide (O-ring) Seal
- (211) A/Trans Fluid Pump Slide Outer Spring
- (212) A/Trans Fluid Pump Slide
- (213) A/Trans Fluid Pump Slide Seal
- (214) A/Trans Fluid Pump Slide Seal Support
- (215) A/Trans Fluid Pump Slide Pivot Pin
- (216) A/Trans Fluid Pump Vane
- (217) A/Trans Fluid Pump Rotor

© 2013 General Motors Corporation. All rights reserved.

- (218) Turbine Shaft Front Bushing
- (219) A/Trans Fluid Pump Cover Assembly
- (220) Converter Feed Limit Valve
- (221) Converter Feed Limit Valve Spring
- (222) Valve Spring Retainer
- (223) Pressure Relief Ball Valve Spring Pin
- (224) Pressure Relief Ball Valve Spring
- (225) Pressure Relief Ball Valve
- (226) TCC Control Valve Spring
- (227) TCC Control Valve
- (228) Turbine Shaft Rear Bushing
- (229) 1-2-3-4 and 3-5 Reverse Clutch Housing Thrust Washer
- (230) 1-2-3-4 and 3-5 Reverse Clutch Fluid Seal Ring
- (231) Bolt, M6 x 40 mm
- (232) A/Trans Fluid Pump Locator Pin
- (233) Pressure Regulator Valve
- (234) Pressure Regulator Valve Outer Spring
- (235) Pressure Regulator Valve Inner Spring
- (236) Isolator Valve
- (237) Isolator Valve Sleeve
- (238) 1-2-3-4 and 3-5 Reverse Clutch Fluid Seal Ring - Inner O-Ring (Qty: 3) - Model Dependent