

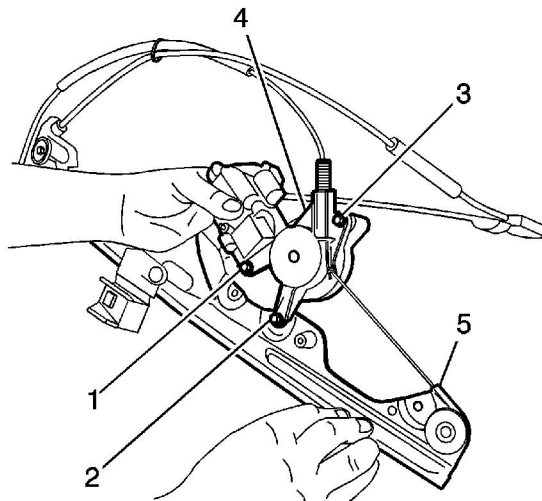
## Front Side Door Window Regulator Motor Replacement

### Removal Procedure

1. Raise the window.

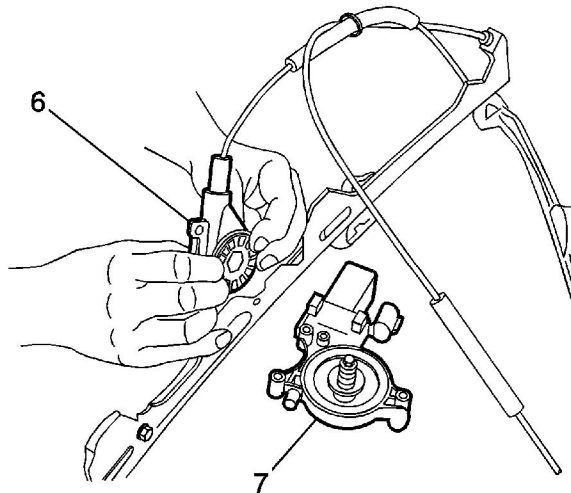
If the window motor is inoperable, remove the window to gain access to the window motor retaining screws. Refer to [Front Side Door Window Replacement](#) .

2. Remove the power window module. Refer to [Front Side Door Window Module Replacement](#)
3. With the window regulator on the bench, remove fasteners one (1) and two (2) which will disconnect the drive housing and motor (4) from the rail (5).



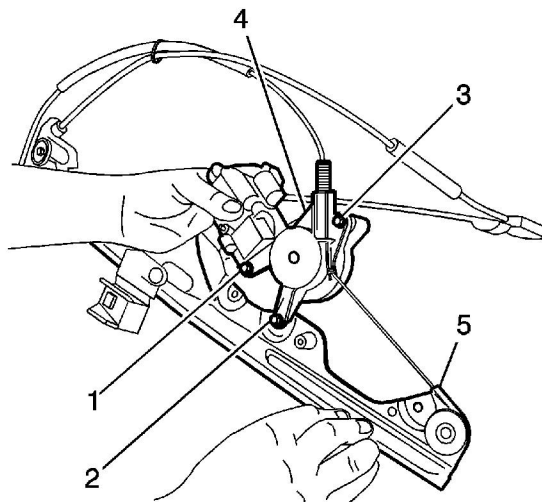
**Important:** Do not allow cable gear/spool to come out of the housing. As the motor slides out of the gear/spool, hold the gear/spool into the housing with your fingers. The spool will unwind if it comes out of the housing.

4. Holding the motor and housing together, remove fastener three (3).
5. Slide the motor partially out of the gear/spool allowing finger access to the gear spool (6). Hold the gear/spool into the housing and remove the motor (7).



## Installation Procedure

1. Install motor by aligning gear teeth and mounting points simultaneously, pushing the motor into the gear/spool and installing the motor to housing fastener first (3).



2. Slide the motor and housing assembly (4) onto the rail (5) and install the fastener number two (2).

**Notice:** Use the correct fastener in the correct location. Replacement fasteners must be the correct part number for that application. Fasteners requiring replacement or fasteners requiring the use of thread locking compound or sealant are identified in the service procedure. Do not use paints, lubricants, or corrosion inhibitors on fasteners or fastener joint surfaces unless specified. These coatings affect fastener torque and joint clamping force and

may damage the fastener. Use the correct tightening sequence and specifications when installing fasteners in order to avoid damage to parts and systems.

3. Rotate the motor and housing assembly to align the attachment point for attachment number one (1) and install the fastener.

### **Tighten**

Tighten the bolts to 5 N·m (44 lb in).

4. Install the power window module. Refer to [Front Side Door Window Module Replacement](#) .
5. Install the window if removed. Refer to [Front Side Door Window Replacement](#) .